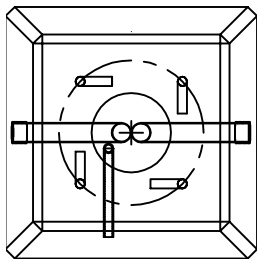
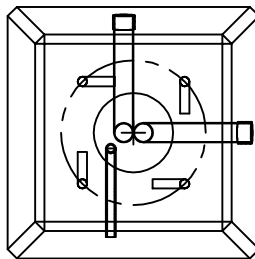


Arrangements possibles selon  
Le modèle et le type de base de lampadaire

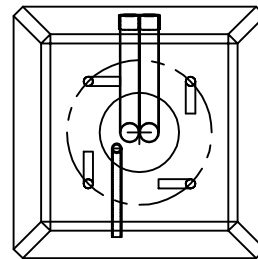
## TYPES DE BASES MODÈLES BL-5



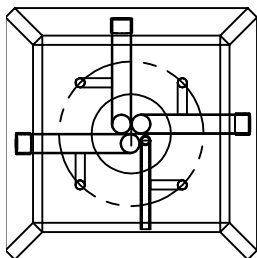
Type 1  
CB:  $\varnothing 374\text{MM MAX}$   
CB:  $\varnothing 130\text{MM MIN}$



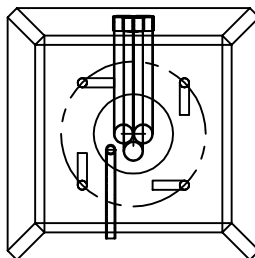
Type 2  
CB:  $\varnothing 374\text{MM MAX}$   
CB:  $\varnothing 130\text{MM MIN}$



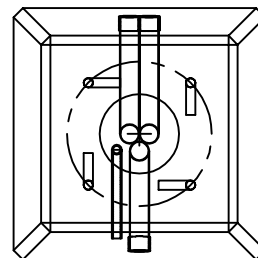
Type 3  
CB:  $\varnothing 374\text{MM MAX}$   
CB:  $\varnothing 130\text{MM MIN}$



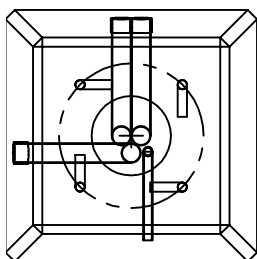
Type 4  
CB:  $\varnothing 374\text{MM MAX}$   
CB:  $\varnothing 130\text{MM MIN}$



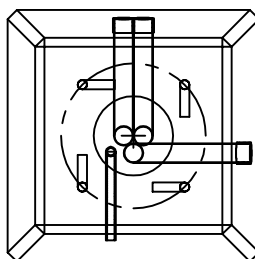
Type 5  
CB:  $\varnothing 374\text{MM MAX}$   
CB:  $\varnothing 130\text{MM MIN}$



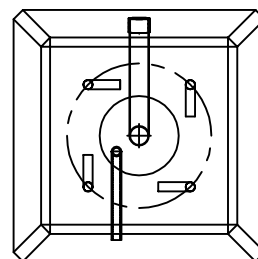
Type 6  
CB:  $\varnothing 374\text{MM MAX}$   
CB:  $\varnothing 130\text{MM MIN}$



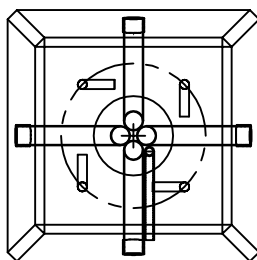
Type 7  
CB:  $\varnothing 374\text{MM MAX}$   
CB:  $\varnothing 130\text{MM MIN}$



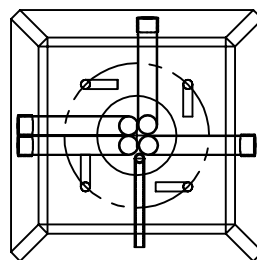
Type 8  
CB:  $\varnothing 374\text{MM MAX}$   
CB:  $\varnothing 130\text{MM MIN}$



Type 9  
CB:  $\varnothing 374\text{MM MAX}$   
CB:  $\varnothing 130\text{MM MIN}$



Type 10  
CB:  $\varnothing 374\text{MM MAX}$   
CB:  $\varnothing 155\text{MM MIN}$



Type 11  
CB:  $\varnothing 374\text{MM MAX}$   
CB:  $\varnothing 155\text{MM MIN}$